

Wireless Access on a Laptop Computer

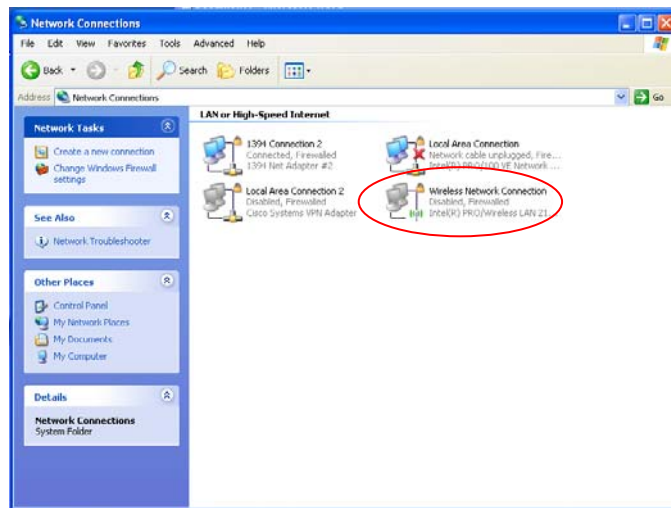
After turning on your laptop and connecting all cords, look for a network or wireless icon in the tray on the lower right corner of the screen. The first picture has no wireless icon. The icon showing is for a wired connection. (NOTE: Some laptops will have a "wireless" button on or near the keyboard that must be enabled. An error message may show up asking for the wireless to be enabled.)



The second picture has a wireless icon. It has the waves next to it.

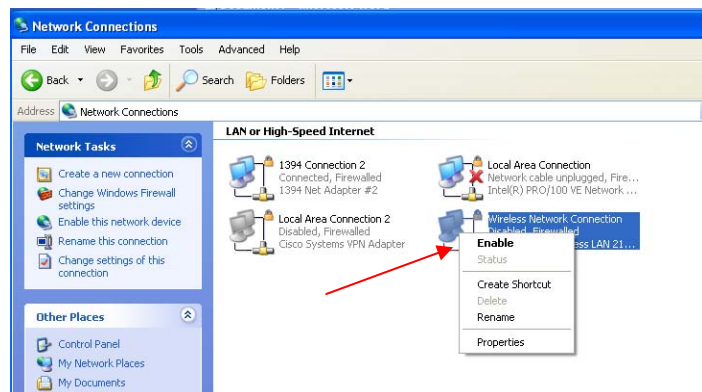


If you can't locate any wireless icon, you need to click **START\CONTROL PANEL\ NETWORK CONNECTIONS**. You may have multiple network connections showing, but look for the wireless connection.

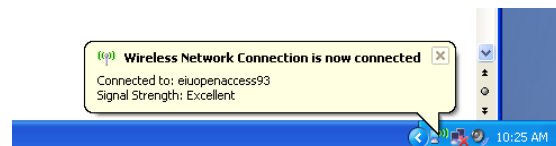


Check to see whether the connection is enabled or if it is disabled.

If the connection is disabled, right click on the item and choose **Enable**.

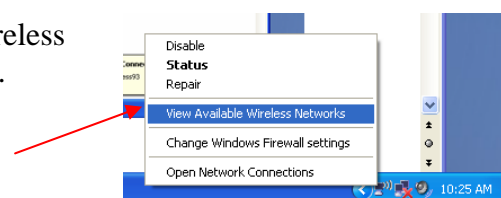


Once the wireless card turns on, you should see a balloon pop up on the tray in the lower right corner. It will notify you if the wireless was able to automatically connect to a signal.



To see all available wireless signals, right click on the wireless icon that now appears in the tray in the lower right corner.

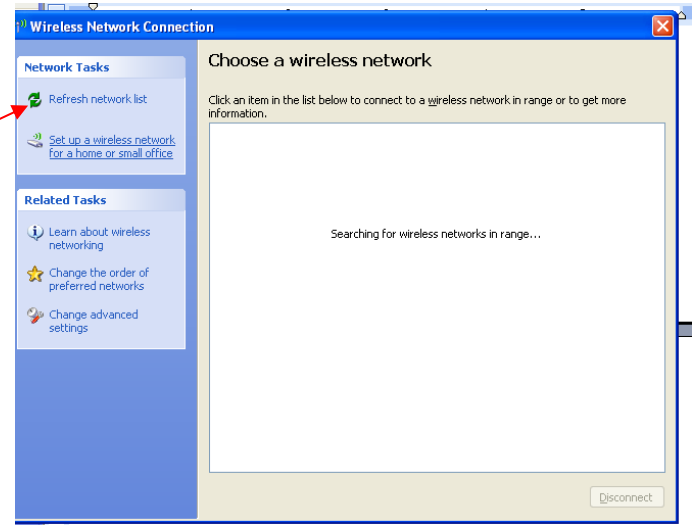
Choose to View Available Wireless Networks.



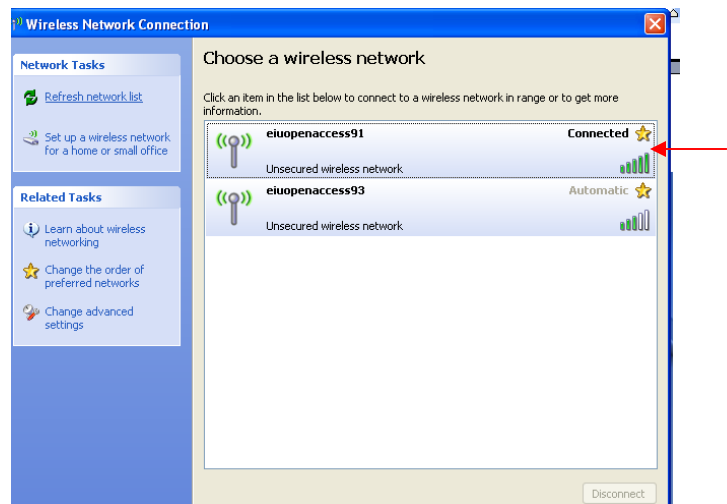
A new dialog box will appear showing available networks.

You may click the Refresh Network List button to see all available networks.

This may be necessary if your laptop is still connected to a wireless network from a previous session. Click the Disconnect button if that happens.



If more than one wireless network is available, check to see which one has the strongest signal. Highlight the signal and click connect to use that network.



When the wireless network is connected you should be able to access the web.

