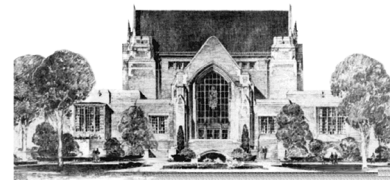


Note Booth



February 2004 Issue Number 21

library news for eiu faculty

Inside

Speaker Series

Film Series

Annual Book Sale

Elizabeth I Speakers

Periodical Review

Media Requests

Children's Storytimes

Tax Forms Available

New Databases

Recommend New Books

Library to Host Elizabeth I Traveling Exhibition

The story of Queen Elizabeth has fascinated and inspired the world during the four centuries since the end of her reign. Like her father, Henry VIII, Elizabeth claimed to have "the heart and stomach of a king." She also had a brilliant and cunning mind that guided her judgments, ruled her actions, and helped her transform England into a world power.

A national traveling exhibition, "Elizabeth I: Ruler and Legend," will visit Booth Library March 4 through April 16, 2004. Organized by the Newberry Library's Center for Renaissance Studies and the American Library Association's Public Programs Office, the exhibition is made possible by major grants from the National Endowment for the Humanities, the Vance Family Fund, and the University of Illinois at Chicago.

The exhibition is based on images reproduced from books, manuscripts, maps, letters, paintings and artifacts in the collections of the Newberry Library, the British Library, the collection of Queen Elizabeth II, and distinguished private collections. It was curated by Clark Hulse, professor of English and art history and Dean of the Graduate College at the University of Illinois at Chicago.

In addition to the official exhibition, the library will present several original exhibits about life in Elizabethan England. Topics for these exhibits include Shakespeare and the Globe Theatre, the roles of women and children in Elizabethan times, and a timeline of important historical events of the Elizabethan era. Several library events will also take place



during the exhibition. Scheduled events include a series of free lectures and panel discussions, live music performances, and films.

A schedule of speaker presentations is available inside; for a complete schedule of Elizabeth I events visit the library website (<http://www.eiu.edu/~booth>) or pick up a brochure at a library service desk.

The exhibit officially opens with a 7 p.m. reception in the Marvin Foyer on Thursday, March 4. All are welcome to attend.

ILL Articles and Library Notices Now Sent via EIU Email

Beginning this semester, Booth Library is sending all library-related notices to our patrons' EIU email accounts. Notices currently being sent include Courtesy Notices (sent three days before an item is due), Overdue Notices, Recall Notices, and Item Available or Item Cancellation Notices for interlibrary loan requests. In addition, most of the articles requested through interlibrary loan will be sent as an attachment to the patrons' EIU email account. Patrons can review items they have borrowed, check due dates and renew items using ILLINET Online's "My Account" feature, available through the library homepage (www.eiu.edu/~booth). To activate an EIU email account, visit the ITS help desk at the Gregg Triad Computer Lab or contact them by phone (581-4357) or email (itshelp@eiu.edu).

Spring Semester Speaker Series

The Booth Library Speaker Series began this spring with a presentation by Dr. Rodney Marshall, Department of Speech Communication. He outlined his "Instrument to Measure Information Competency" on February 4 in the Library Conference Room (4440). He discussed the measuring of skills needed in order to become information literate.

"Interface between Evolutionary Theory and Theology: Can a Darwinian be Religious?" was the second presentation of the series, co-sponsored by the Department of Biological Sciences. Held February 9 in the Lumpkin Hall Auditorium the presentation featured a panel of six religious leaders representing different religious and philosophical traditions. Each offered a perspective on evolutionary theory in light of his or her religious beliefs or affiliations. The formal presentations were followed by open discussion with the public.

On February 25, at 3:30 p.m., Dr. Barbara Powell, Counseling and Student Development, will present a paper on the Gullah people. Descendants of American slaves, these people now live on islands along the southeast coast of the United States. Dr. Powell will discuss the Gullah people's history and language, the challenges facing them today and the efforts being made to maintain their culture. The presentation will take place in the Library Conference Room (4440).

"The Origins and Evolution of the Literary Anthology" will be presented April 21 at 3:30 p.m. by Dr. Christopher M. Kuipers of the English Department. He will present an analysis of the ways in which anthologies have changed over time along with the changing literary canon. He will also discuss ways in which today's literary anthologies may be evaluated and appreciated in their historical context. The presentation will take place in the Library's Conference Room (4440).

Free Film Series Presents Documentaries on Science, Politics and Social Issues

Booth Library's free film series continues this semester with a selection of films covering a wide range of subjects including paleoanthropology, politics, and social science. Films are shown in the Seminar Room (3202) on selected Tuesdays at 4 and 7 p.m. Upcoming film screenings:

March 2 *Boys Will Be Men*

Recent school shootings along with a myriad of studies and statistics support the warning being sounded by social scientists: boys are in trouble. This film explores what it means to grow up male in America today. 57 min.

March 23 *20 Years Old in the Middle East*

Filmed after the fall of Saddam Hussein, *20 Years Old in the Middle East* traverses the region to take the pulse of Arab and Iranian youth. This

film gives Western college students an opportunity to truly understand the lives and attitudes of their Middle Eastern counterparts. 52 min.

April 6 *James Baldwin: The Price of the Ticket*

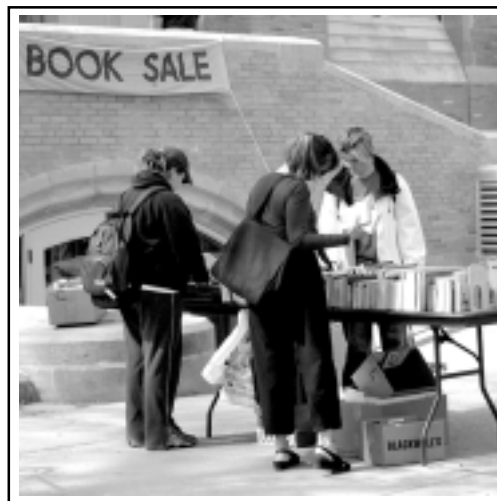
Born black, impoverished, gay and gifted, James Baldwin became a major American author and civil rights activist as well as a prophetic voice calling all Americans to confront their shared racial tragedy. This presentation captures on film the story behind Baldwin's passionate intellect and courageous writing. 87 min.

April 20 *The Ape that Took Over the World*

Is the key theory about how we evolved from apes based on mistaken evidence? This film discusses the implications of recently discovered fossil remains now known as "Flat-Faced Man." This discovery, shown to be as old as the famous "Lucy," is rewriting the theories. 50 min.

Annual Book Sale and National Library Week

As part of our celebration of National Library Week, Booth Library will hold its annual book sale on Wednesday, April 21. The sale will take place on the library quad in front of the north entrance from 9 a.m. to 4 p.m. Prior to the sale, if you have books, videos or sound recordings that you would like to donate, please bring them to the Circulation Desk or contact Jocelyn Tipton at 581-6072. All donated materials will be evaluated for inclusion in the library's circulating collection before the sale. Proceeds from the sale will be used to enhance library services.



Students select books at a previous book sale. This year the sale will again be held at the library's north entrance.

Schedule of Speakers for Elizabeth I Celebration

ELIZABETH

Ruler and Legend

| Date | Speaker | Topic | Time | Place |
|----------|--|--|--------|-------------------------|
| March 8 | Newton Key, Peter Loewen, Christopher J. Mitchell, Carol Stevens | The Elizabethan World: An Introduction | 7 p.m. | Lumpkin Hall Auditorium |
| March 11 | Bailey Young, Bonnie Irwin, Francine McGregor, Tim Shonk | Women of Power, Women of Culture: Elizabeth's Medieval Heritage | 7 p.m. | Buzzard Hall Auditorium |
| March 22 | Carole Levin, Robert Bucholz | England's Greatest Queens: Elizabeth I and Anne | 7 p.m. | Buzzard Hall Auditorium |
| March 23 | John Whisler, Larry Shobe | The Knot and the Herbal: Gardens and Plants of the First Elizabethan Era | 4 p.m. | Library Conference Room |
| March 31 | Karla Kennedy-Hagan | Food, Drink and Health in Old England | 4 p.m. | Library Conference Room |
| April 6 | Peter Loewen, Richard Rossi | A Catholic at Elizabeth's Court: William Byrd & Musical Medievalism in Renaissance England | 4 p.m. | Library Conference Room |
| April 7 | Lisa New Freeland | The Look to Die For: Elizabethan Beauty Tips | 4 p.m. | Library Conference Room |
| April 8 | Lilian Barria | Women Rulers in the 20th Century | 4 p.m. | Library Conference Room |
| April 12 | Julie Campbell & students | Queen Elizabeth's Court: A Center of Culture and Power | 4 p.m. | Library Conference Room |
| April 13 | Sheila Simons | Smallpox: History, Inoculation, Vaccination, and Eventual Eradication | 4 p.m. | Library Conference Room |
| April 14 | Michelle LeMaster | Elizabeth I and America: The Beginnings of the First British Empire | 4 p.m. | Library Conference Room |
| April 15 | Newton Key & students | The Elizabethan Age Revised: Students Present Aspects of Research | 4 p.m. | Library Conference Room |

Periodical Review and Media Collection Requests

The 2004 **Periodical and Standing Order Review** will begin Monday, March 22. As in previous years, the review will be conducted in two phases. Phase I is designed to encourage academic departments to review their periodical and standing order subscriptions in light of current curricular and research needs, future needs, and fiscal realities. At the end of Phase I, the library will publish for campus review a list of those titles submitted for cancellation or contingency cancellation. Phase II begins July 1 with the approval of the FY05 budget and concludes in mid-October when the final recommendations will be due.

Booth Library will be distributing forms to department chairs for the annual "**Media Collection Requests**" process on April 5. All faculty are encouraged to recommend titles they feel would be worthwhile additions to the collection. Whenever possible, materials will be purchased in DVD format. Completed forms should be returned by Friday, April 30.

If you have questions regarding the Periodical and Standing Order review or the Media Collection Requests process, please call the library at 581-6072.

New Online Resources

American Humanities Index

A collection of bibliographic references to literary, scholarly and creative journals published in the United States and Canada. This database contains over 700 journals published from 1975 to the present.

CINAHL

(Cumulative Index to Nursing and Allied Health Literature)

Provides full-text from over 600 health and nursing journals plus legal cases, clinical innovations, critical paths, drug records, research instruments and clinical trials.

Clase and Periodica

Offers access to more than 300,000 bibliographic citations from documents published in 2,600 scholarly journals in the Spanish, Portuguese, French, and English languages from 24 Latin American and Caribbean countries. *Clase* specializes in the social sciences and humanities, generally 1975 to the present. *Periodica* specializes in science and technology, generally 1978 to the present.

Communication & Mass Media Complete

A selected full-text database covering areas related to communication and mass media. *CMMC* offers full text for over 200 titles and contains citation coverage for additional sources.



Children's Storytimes

The Ballenger Teacher's Center is hosting weekly Children's Storytimes this semester. Every

Saturday through March 6, children ages three to six are invited to attend, accompanied by an adult. Stories will be presented by Education Librarian Ann Brownson and by students in EIU's teacher education program. Storytimes begin at 11:00 a.m.

Tax Forms Available

Copies of all major federal and Illinois state tax forms and booklets are available at the library Reference Desk. Additional specialized forms are available for photocopying and online. Links to online tax forms are available on the library website under "News."

Subject browsing for EIU print and electronic journals

Booth Library now offers a web-based subject guide, providing subject browsing of all journals available in print or electronically. Subject categories for this list are provided by *Ulrich's Periodicals Directory*; they differ slightly from library fund categories.

The lists are available on the library homepage under *Magazines, Journals, and More / Resources by Subject / Journals*.

Recommend new books and more

@your library

Each year, Booth Library adds thousands of new items to our collection, including books, DVDs, music recordings, etc. If we don't have an item that you'd like us to acquire, we'd like to hear from you. Please take a moment to fill out the Materials Suggestion Form (found on our website under "Quick Links / Request materials for purchase") or contact your departmental library coordinator.